

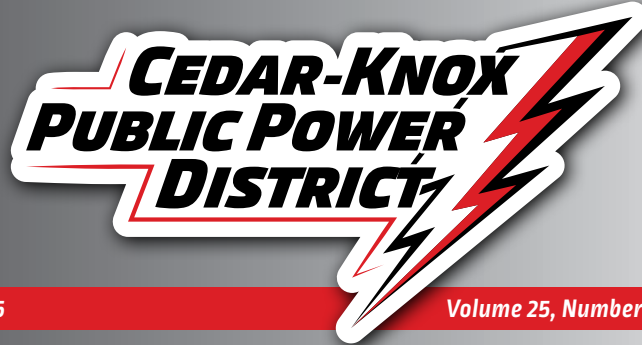
# CURRENT FLASHES

P.O. Box 947, Hartington, NE 68739 • Phone: 402-254-6291 / 800-891-5196

[cedarknoxppd.com](http://cedarknoxppd.com)

JUNE 2025

Volume 25, Number 05



## HELP PREVENT OUTAGES: TRIM TREES IN FENCE LINES

Local landowners and residents are encouraged to inspect, remove, or trim any trees growing along their fence lines, especially those located under power lines. Taking a proactive approach now—while trees are still manageable—can help prevent serious issues later.

When trees grow into power lines, they pose a risk of burning, causing power outages, or possibly even sparking a fire. Early maintenance not only helps ensure a safer, more reliable power supply, but it also reduces the need for CKPPD labor, tree spraying, and other costly interventions. These savings benefit everyone by helping keep utility rates down. This will also help prevent damage to your fences or structures that might become overgrown by the trees.

If you notice trees touching or dangerously close to power lines, don't attempt to handle it yourself—please give us a call so our crew can safely take care of it. Thanks for helping us keep our local power system safe, reliable, and affordable for everyone!



### DAILY CONTROL INFORMATION:

Irrigation Hotline  
**402-254-6322**  
or [www.cedarknoxppd.com](http://www.cedarknoxppd.com)

## IRRIGATION 2025 NOTES:

- 💧 If you have a green control light, please call in. We can send a signal from the office. It may be difficult to see the lights, so shielding the screen with your hand may help.
- 💧 If you have added or moved a pivot, please let us know to allow proper radio control installation.
- 💧 Evaluate your irrigation setup to ensure that the stops are in place and the end gun avoids spraying CKPPD lines and transformer banks, as well as the roadways nearby
- 💧 Keep the disconnect in the on position during control season and avoid running on hand, both methods can impede the power restoration once the control window is over.
- 💧 When control hours begin, we start controlling systems 10 minutes before the stated hour. It can take up to 5 minutes after the stated time to restore power. At that time, if your irrigation does not come back on, call 402-254-6291, option 3 for assistance.

**Text Messaging is available for \$20 per phone number. This enables you to receive texts on either potential control times for the day or the actual time your system shuts off and turns back on. Contact our office to sign up for this service.**

## NOTICE: FEE CHANGES

At the March Board Meeting, updates were made to the charges and fees associated with late payments. The revised charges and fees listed below took effect on June 1st.

**Late Payment Charge** . . . . . 5% of balance due or \$10,  
whichever is greater

**Reconnect Fee** . . . . . \$50

**Reconnect Fee After Hours** . . \$100

**Failed Payment Fee** . . . . . \$15

As a reminder, if you're unable to pay your bill by the due date, please contact us. We're happy to provide an extension on your account to prevent disconnection; however, this will not exempt you from the late fees. Thank you for your attention to these updates. If you have any questions or need assistance, please feel free to contact us.

## CLOSED 4TH OF JULY

**The CKPPD Office will be closed on Friday, July 4th for Independence Day!**

For an outage or emergency, please call us at **(402) 254-6291**. Our trouble crew will answer the phone and dispatch as needed. For billing questions or payments, feel free to leave a voicemail and your message will be answered the next business day.

## SUMMER HOURS

Summer Hours will run until Labor Day. Crew and Office summer hours are **7:00 a.m. to 3:30 p.m.**

**If you have an outage or emergency after business hours, be sure to call 402.254.6291 or 1.800.891.5196.**

You must dial one of these numbers to reach our linemen on call or to leave a message for the billing department. Thank you!

# IS IT TIME TO REPLACE YOUR LAWN OR GARDEN EQUIPMENT?

**ENERGYWISE**  
Use less. Spend less. Do more.



If it has been a while since you have purchased a new lawn tool, maybe now is the time! EnergyWise incentive program offers a customer rebate of 20% on any new electric chainsaw, tiller, or lawn mower, not to exceed \$1,500 per incentive. The incentive amount is based on the purchase price only (installation, taxes, delivery/shipping and setup costs are NOT eligible).

For more information on this or any other rebates, visit our website at [www.cedarknoxppd.com](http://www.cedarknoxppd.com). Click the ENERGY EFFICIENCY tab, then select Rebate Programs to review all the options.



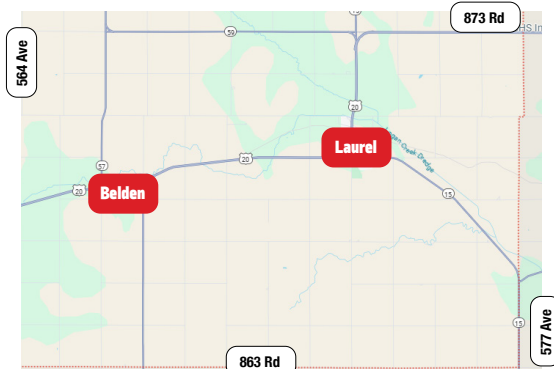
## ANNUAL POLE INSPECTIONS UNDERWAY – BELDEN-LAUREL AREA

It's that time of year again—our annual pole inspections are set to begin. This year, inspections will be conducted in the Belden-Laurel area as depicted by the map below, including within the Village of Belden. Please note that the town of Laurel is not included in this round of inspections, just the rural area surrounding the town.

Cedar-Knox PPD has partnered with Global Utility Services to carry out this project. As an independent contractor, **Global Utility Services will be using their own vehicles, which may include white trucks and four-wheelers.**

If you have any questions or concerns, please don't hesitate to contact us.

Thank you for your cooperation!

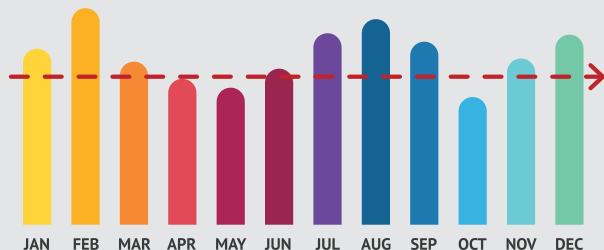


## BUDGET BILLING

Are you interested in our budget billing program? With budget billing, customers pay a set amount each month despite energy usage fluctuations. This can be a convenient option for those on a fixed income or customers that just prefer to know how much to plan for each month.

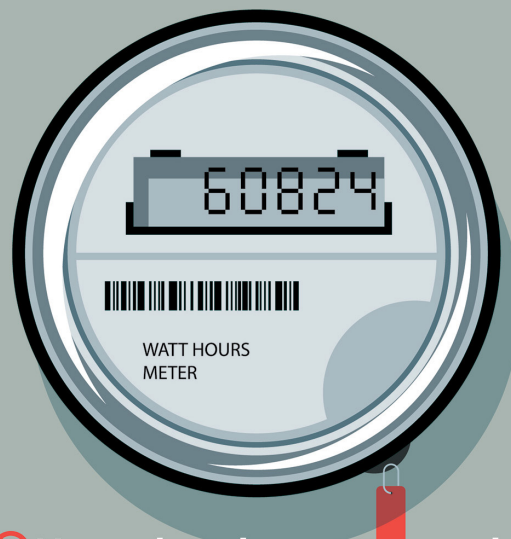
If you have lived at your current property for at least 12 months and your account balance is current, you qualify to sign up for this program. Budget accounts are charged a set amount, then once a year with your June billing statement, we settle up your account to a zero balance. If you would like specific information pertaining to your account or to join this program, give us a call.

**Avoid seasonal peaks in your energy bills with budget billing.**



## DO NOT TAMPER WITH YOUR ELECTRIC METER

**Meter tampering is dangerous and can result in electric shock.**



- ⊘ Never break a meter seal.
- ⊘ Never open a meter base.
- ⊘ Never remove a meter or alter an entrance cable in any manner.

**If you need assistance with your meter, please contact us at (402) 254-6291.**

## EMPLOYEE ANNIVERSARY

Join us in congratulating **Chase Dettman** on reaching his 5-year milestone here at Cedar-Knox PPD! Chase serves as a Journeyman Lineman on our crew and he says his favorite part of the job is helping others. Chase lives in Hartington, where he's become an active member of the community, recently joining the Hartington Volunteer Fire Department. In his spare time, he enjoys golfing.

Thank you, Chase, for your hard work and commitment to service. We appreciate all that you do!



**5 Years**